



AHC Property Ltd
Commercial & Residential
Property Specialists

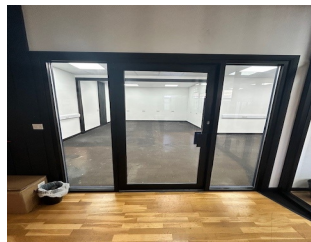
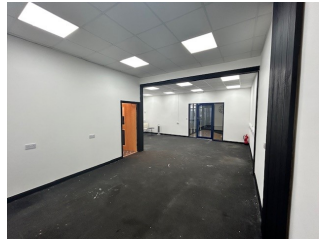
Strasbourg Street, Westwood Industrial Estate, Margate, Kent, Ct9 4JJ
Telephone: 01843 220168 Email: steve@ahcproperty.co.uk

www.ahcproperty.co.uk

Property Particulars

Westwood Business Park, Margate CT9 4JJ

OFFICE AVAILABLE TO RENT ON AN ESTABLISHED BUSINESS PARK



TERM

The property is being offered on a new lease. The lease will be a minimum 3 year

Usage

Would be ideal as:

- Office
- Workspace

RENT

£750.00 + vat per month

SERVICE CHARGE & INSURANCE DEPOSIT

N/A

ADDITIONS Access to forklift, scissor lift and container loading ramp available to tenants

BUSINESS RATES

Prospective tenants are advised to make their own enquiries with the local authority.

ENERGY PERFORMANCE RATING The property has an EPC rating of E.

VAT

VAT will be payable if applicable.

VIEWINGS

Strictly by appointment through AHC Property Ltd on 01843 220168.

Steve Adams
steve@ahcproperty.co.uk

LOCATION

The Property is found just off Margate Road on Westwood Business Park, which is situated on the Westwood Industrial Estate.

The Estate benefits from good local bus services and main roads with easy access. The Park comprises a range of different sized Industrial, Commercial, Office, Storage Units and Art Studios.

The park is found within a minute of the all the major towns in the area, along with the major Westwood Cross retail shopping park.

DESCRIPTION

Unique Opportunity to take on this space at the heart of Westwood Industrial Estate.

Viewing Highly Recommended

- 603 sqft
- Shared reception area
- Separate Kitchenette Area
- Onsite CCTV
- Car Parking Available
- 3 Year minimum lease.